

TYPE

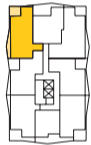
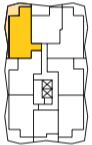
# C10

2 BED  
2 BATH

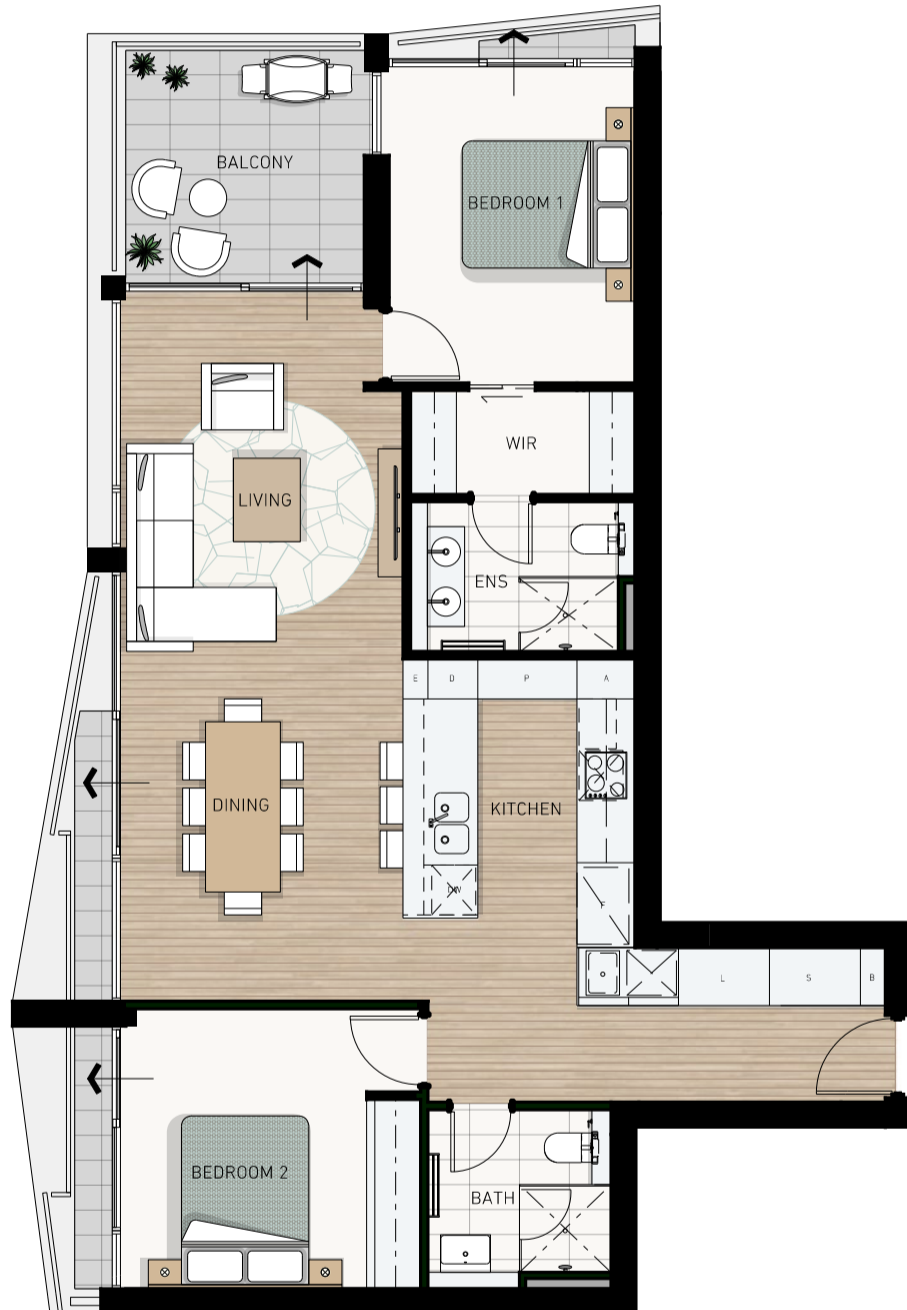
<b>APARTMENT</b>	<b>45, 61, 77, 93, 109</b>
Apartment Area	94m <sup>2</sup>
Balcony Area	23m <sup>2</sup>
<b>Total Living Area</b>	<b>117m<sup>2</sup></b>
Car Bays	1 or 2*
Store	4m <sup>2</sup>

<b>APARTMENT</b>	<b>53, 69, 85, 101</b>
Apartment Area	94m <sup>2</sup>
Balcony Area	18m <sup>2</sup>
<b>Total Living Area</b>	<b>112m<sup>2</sup></b>
Car Bays	1 or 2*
Store	4m <sup>2</sup>

<b>LEVEL</b>	<b>LEVEL</b>
<b>03, 05, 07, 09, 11</b>	<b>04, 06, 08, 10</b>
Apt. No. 45, 61, 77, 93, 109	Apt. No. 53, 69, 85, 101



APARTMENT 53 SHOWN  
\*Refer to strata plans



GENERAL NOTES: Variations from strata plans may apply. Furniture is indicative. Shape and configuration of living areas balconies, wall structure, doors, windows, aircon condensers and ducts may differ from those illustrated. Areas of apartment given are based on architectural measurements which varies from strata areas as different methods of measurement is applied.

0 1 2 3M

