

TYPE

C12

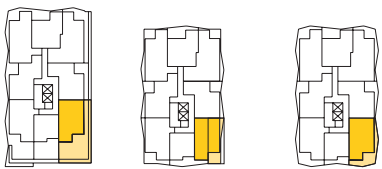
2 BED
2 BATH

| | |
|--------------------------|-------------------------|
| APARTMENT | 65, 81, 97, 113 |
| Apartment Area | 86m ² |
| Balcony Area | 26m ² |
| Total Living Area | 112m² |
| Car Bays | 1 or 2* |
| Store | 4m ² |

| | |
|--------------------------|-----------------------------|
| APARTMENT | 57, 73, 89, 105, 120 |
| Apartment Area | 86m ² |
| Balcony Area | 17m ² |
| Total Living Area | 103m² |
| Car Bays | 1 or 2* |
| Store | 4m ² |

| | |
|--------------------------|-------------------------|
| APARTMENT | 49 |
| Apartment Area | 86m ² |
| Balcony Area | 92m ² |
| Total Living Area | 178m² |
| Car Bays | 1 or 2* |
| Store | 4m ² |

| | | |
|-----------------|-----------------------------|----------------------------------|
| LEVEL 03 | LEVEL | LEVEL |
| Apt. No. 49 | 05, 07, 09, 11 | 04, 06, 08, 10, 12 |
| | Apt. No. 65, 81, 97, 113 | Apt. No. 57, 73, 89, 105, 120 |



APARTMENT 57 SHOWN

*Refer to strata plans



GENERAL NOTES: Variations from strata plans may apply. Furniture is indicative. Shape and configuration of living areas balconies, wall structure, doors, windows, aircon condensers and ducts may differ from those illustrated. Areas of apartment given are based on architectural measurements which varies from strata areas as different methods of measurement is applied.

0 1 2 3M

