

TYPE

# C13

2 BED  
2 BATH



<b>APARTMENT</b>	<b>67, 83, 99, 115</b>
Apartment Area	88m <sup>2</sup>
Balcony Area	25m <sup>2</sup>
<b>Total Living Area</b>	<b>113m<sup>2</sup></b>
Car Bays	1 or 2*
Store	4m <sup>2</sup>

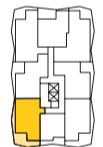
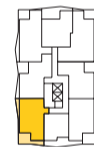
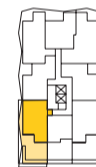
<b>APARTMENT</b>	<b>59, 75, 91, 107, 122</b>
Apartment Area	88m <sup>2</sup>
Balcony Area	17m <sup>2</sup>
<b>Total Living Area</b>	<b>105m<sup>2</sup></b>
Car Bays	1 or 2*
Store	4m <sup>2</sup>

<b>APARTMENT</b>	<b>51</b>
Apartment Area	88m <sup>2</sup>
Balcony Area	54m <sup>2</sup>
<b>Total Living Area</b>	<b>142m<sup>2</sup></b>
Car Bays	1 or 2*
Store	4m <sup>2</sup>

**LEVEL 03**  
Apt. No. 51

**LEVEL**  
**04, 06, 08, 10, 12**  
Apt. No. 59, 75,  
91, 107, 122

**LEVEL**  
**05, 07, 09, 11**  
Apt. No. 67,  
83, 99, 115



APARTMENT 59 SHOWN  
\*Refer to strata plans

GENERAL NOTES: Variations from strata plans may apply. Furniture is indicative. Shape and configuration of living areas balconies, wall structure, doors, windows, aircon condensers and ducts may differ from those illustrated. Areas of apartment given are based on architectural measurements which varies from strata areas as different methods of measurement is applied.

0 1 2 3M

