

TYPE

# C5

2 BED  
2 BATH

APARTMENT 17, 18, 19, 24, 25, 26, 37, 38

Apartment Area 78m<sup>2</sup>

Balcony Area 14m<sup>2</sup>

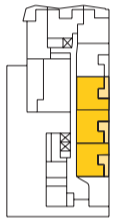
**Total Living Area 92m<sup>2</sup>**

Car Bays 1 or 2\*

Store 4m<sup>2</sup>

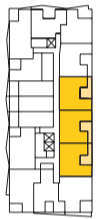
LEVEL G

Apt. No.  
17, 18, 19



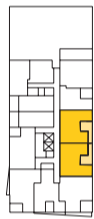
LEVEL 01

Apt. No.  
24, 25, 26



LEVEL 02

Apt. No.  
37, 38



APARTMENT 26 SHOWN

\*Refer to strata plans



GENERAL NOTES: Variations from strata plans may apply. Furniture is indicative. Shape and configuration of living areas balconies, wall structure, doors, windows, aircon condensers and ducts may differ from those illustrated. Areas of apartment given are based on architectural measurements which varies from strata areas as different methods of measurement is applied.

0 1 2 3M

